

DURAFLOOR SL MT (Multi-Tone)

A DECORATIVE RESIN FLOOR COATING SYSTEM

CEMKRETE®

ISO 9001 & 14000 CERTIFIED

DESCRIPTION

DURAFLOOR SL MT is a smooth, decorative multi-tone epoxy resin floor coating that works in tune with a wide range of modern commercial settings.

It also provides a completely seamless finish when being installed using specialized application techniques to create the effect of multi-dimensional colors across the surface of the floor.

USES

As the system comes in a range of subtle colors to enhance the mood of any setting, **DURAFLOOR SL MT** is a popular choice for commercial clients looking to impress underfoot appearance. Suited to be used as a decorative coating for retail stores, fashion boutiques, restaurants, bars and other commercial premises.

BENEFITS

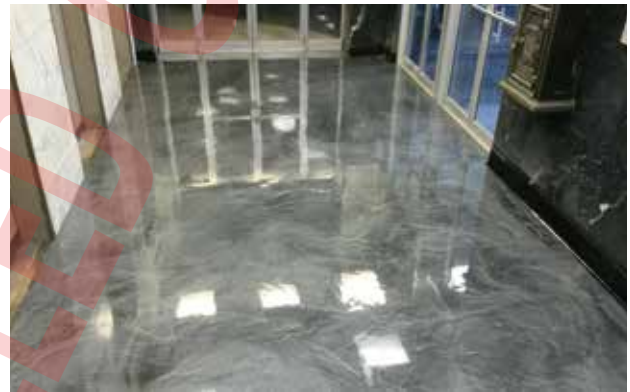
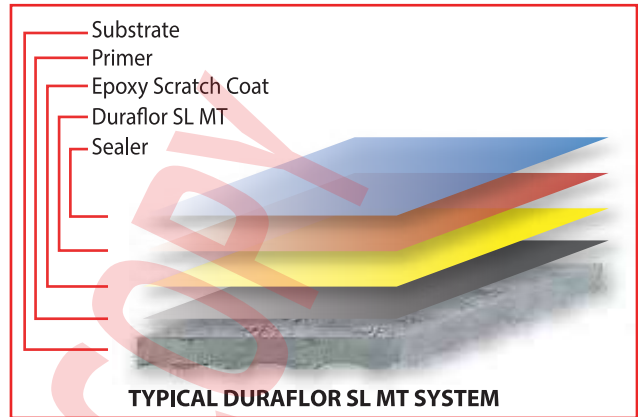
- As a decorative, multi-dimensional finish
- Would not crack due to shrinkage
- Provides a natural, artistic design finish
- Exceptional wear resistance
- A smooth & seamless hygienic finish
- A resilient & easy to clean finish

COLOR

Available in a range of Standard Colors. Variations can be achieved with different combination of color bases.

FINISH

Gloss



Technical Data :

No. of Components	2
No. of Coats Recommended	2
Application	Roller or trowel
Recommended Dry Film Thickness	100µ
Estimated Coverage	6m ² /kgs/coat
Theoretical coverage @ 100µm	4m ² /kg
Mixing Ratio	2.5 : 1.5 by weight of Part A & Part B
Volume solids	100%
Touch dry	2 hours @ 25°C
Hardness (Shore D)	70 - 75
Compressive Strength	50N/mm ²
Tensile Strength	12N/mm ²
Flexural Strength	30N/mm ²
Abrasion Resistance	100 mg/1000 cycles
Water Permeability	Nil – Karsten test (impermeable)
Chemical Resistance	Contact Technical Department
Temperature Resistance	Tolerant up to 60°C
Tear Strength	11 MPa (BS 6319)
Bond Strength	Greater than cohesive strength of 25 N/mm ² concrete. >1.5 MPa
Pot Life	20min @ 30°C
Storage & Shelf life	Unopened in dry conditions at 25°C / 12 months
Packaging	4kg & 16 kg

NOTE: Coverage figure given is theoretical. Due to wastage factors, the variety nature of the substrate, and the site application condition, etc., the practical coverage may be reduced.

The information given in this data sheet is to the best of our knowledge true and accurate; but as we have no control over where or how the product is applied, there are no warranties expressed or implied regarding the product's use or performance. Customers are advised to thoroughly test before adapting them to their own use. It is strongly recommended to trial on small area before large scale application.

WEBSITE

www.cemkrete.com.my

TELEPHONE

+603-8062 4478

FAX

+603-8061 5877

EMAIL

enquiry@cemkrete.com.my



DURAFLO SL MT (Multi-Tone)

A DECORATIVE RESIN FLOOR COATING SYSTEM

CEMKRETE®

ISO 9001 & 14000 CERTIFIED

MODEL SPECIFICATION

System: DURAFLO SL MT
 Thickness: Dependent on specification as desired
 Preparatory work and application in accordance with manufacturer's instructions.

SUBSTRATE REQUIREMENTS

Concrete or screed substrate should be a minimum compressive strength of 25N/mm², free from laitance, dust and other contaminants. The substrate should be dry to 75% RH as per BS8204 and free from rising damp and ground water pressure.

PRODUCTS INCLUDED IN THIS SYSTEM

Primer
 Scratch Coat
 DURAFLO SL MT
 Sealer

Detailed application instructions are available upon request.

INSTALLATION SERVICE

The installation should be carried out by a CEMKRETE approved applicator with a documented quality assurance scheme. Obtain details of our approved contractors by contacting our customer service team or enquiring via our website at www.cemkrete.com.my

ENVIRONMENTAL CONSIDERATIONS

The finished system has been assessed as non-hazardous to health and the environment. The long service life and seamless surface reduce the need for repairs, maintenance and cleaning.

CLEANING

Clean regularly using a single or double-headed rotary scrubber dryer in conjunction with a mildly alkaline detergent.

COLOR STABILITY

DURAFLO SL MT is not colorfast and may change color over time (exhibits a yellowing effect) if exposed to UV light and high heat sources. Hence the rate of change cannot be predicted accurately. Color changes are more noticeable in light colors and in blues but does not compromise the product's chemical resistance or physical characteristics. Consult our Technical Department for UV light stable specification.

TECHNICAL INFORMATION

The figures that follow are the typical properties achieved in laboratory tests at 20°C and at 50% Relative Humidity.

Fire Resistance	BFL - s1 (EN 13501-1)
Slip Resistance	Dry >40,
Method described in BS 7976-2 (typical values for 4-S rubber slider)	Wet depends on specification (in accordance with HSE and UKSRG guidelines)

Note that the slipperiness of flooring materials could change significantly due to the installation process, inappropriate maintenance work, longer-term wear and/or surface contamination (wet or dry).

Textured systems are recommended in order to meet the slip resistance value requirements for wet conditions and/or surface contaminants (wet or dry).

Please contact our Technical Advisors for further details and specifications.

CURING

	10°C	20°C	30°C
Light Traffic	36 hrs	24 hrs	12 hrs
Full traffic	72 hrs	48 hrs	24 hrs
Full chemical cure	12 days	7 days	6 days

HEALTH & SAFETY

Some of the components in DURAFLO SL MT system may be hazardous during mixing and application. Always use with suitable protective gears and ensure that there is adequate ventilation. Please read the relevant Health & Safety Data Sheet, available on request.

FURTHER INFORMATION

With a wealth of technical and practical experience built up over many years in our pursuit of excellence especially in the protective, flooring and concrete technology, make CEMKRETE your partner. Contact our hotline today.

The information given in this data sheet is to the best of our knowledge true and accurate; but as we have no control over where or how the product is applied, there are no warranties expressed or implied regarding the product's use or performance. Customers are advised to thoroughly test before adapting them to their own use. It is strongly recommended to trial on small area before large scale application.

WEBSITE

www.cemkrete.com.my

TELEPHONE

+603-8062 4478

FAX

+603-8061 5877

EMAIL

enquiry@cemkrete.com.my